

New technology

Wearable preventable devices

- **FlowAid** : Activates the calf muscle pump by compressing the deep veins of the lower leg through a number of electrically stimulated controlled contractions.
- These contractions, which run from distal to proximal along the leg, cause a peristaltic wave of contractions.



Wearable preventable devices

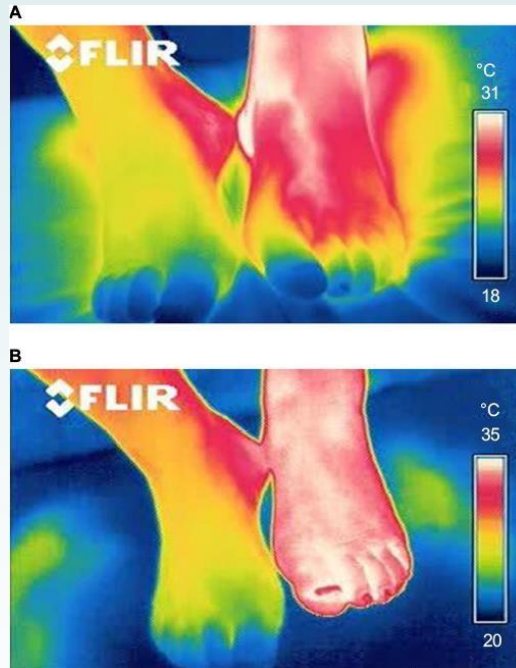
- This compresses the deep veins, which forces the emptying of the deep veins of the lower limb
- Activation of the calf muscle pump, an increase of 'Arterial Inflow' will be created which replenishes the limb with freshly oxygenated blood.



Wearable preventable devices



- Peripheral Arterial Disease (PAD)



- Peripheral Neuropathy & Pain
- Chronic Ulcers and Wounds
- Lymphedema /Oedema
- DVT Prevention

Combination of wound bed preparation and FlowAid



New Treatment Strategies

- There are new treatments out there and you will come up against barriers but you can overcome them
- There are key drivers for change you can use
- There will be different conversations to be had depending on where you work

Remember you can influence change in your patient outcomes